

abrdn Medical Science Innovation Portfolio, Series 8

Investment Objective

The abrdn Medical Science Innovation Portfolio, Series 8 (trust) seeks to maximize total return through capital appreciation.

Key Considerations

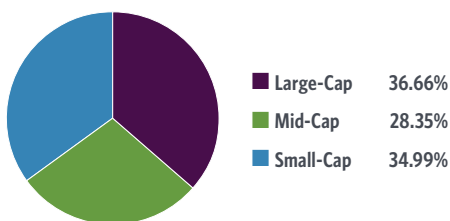
- **Growth Potential from Innovation:** Seeks to offer attractive growth opportunities from the advances that may drive the future of the healthcare sector.
- **Portfolio Founded on Healthcare Expertise:** Guggenheim, with the assistance of abrdn, selects portfolio holdings through a unique combination of fundamental research and extensive expertise in the healthcare industry.
- **Capitalize on Demographic Trends:** Guggenheim believes an aging population and increases in chronic conditions, such as obesity, diabetes and cancer, may fuel demand for innovative healthcare solutions.

Past performance is no guarantee of future results. There is no guarantee that these trends and projections will continue or come to fruition and they are subject to change.

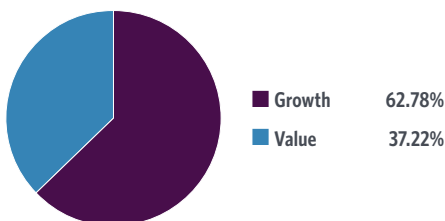
Portfolio Allocation

Breakdown and weightings are as of 5.17.2024 and subject to change.

CAPITALIZATION BREAKDOWN



STYLE BREAKDOWN



1 National Institutes of Health, "The Promise of Precision Medicine: Rare Diseases," November 16, 2023.
 2 Population Reference Bureau, "Fact Sheet: Aging in the United States," January 9, 2024.

Capitalize on Next-Gen Healthcare Growth Opportunities

Propelled by innovation and changing demographics, the healthcare industry may be entering an age that may offer opportunities to extend and enhance the quality of human lives. In many areas of the healthcare sector, accelerated research, funding, use of technology applications, and faster regulatory approvals are spurring the pace and volume of medical advances and opening new investment opportunities, such as gene therapy, personalized medicine and cell-based therapies. Guggenheim believes demographic shifts of an aging population and increases in chronic health issues may also act as tailwinds to drive new opportunities in healthcare.

To provide exposure to this exciting growth potential, Guggenheim has partnered with abrdn Inc. ("abrdn") to develop the **abrdn Medical Science Innovation Portfolio**, which seeks to offer access to innovative medical science companies, companies considered to be developing novel products to address medical needs. abrdn has a team of leading healthcare management professionals that combines a top-down perspective based on deep knowledge of the healthcare sector with bottoms-up fundamental research to potentially identify some of the most promising opportunities in a dynamic market. The abrdn Medical Science Innovation Portfolio seeks to maximize total return by investing in innovative companies that may be able to capitalize from the key trends currently driving healthcare.

Key Themes

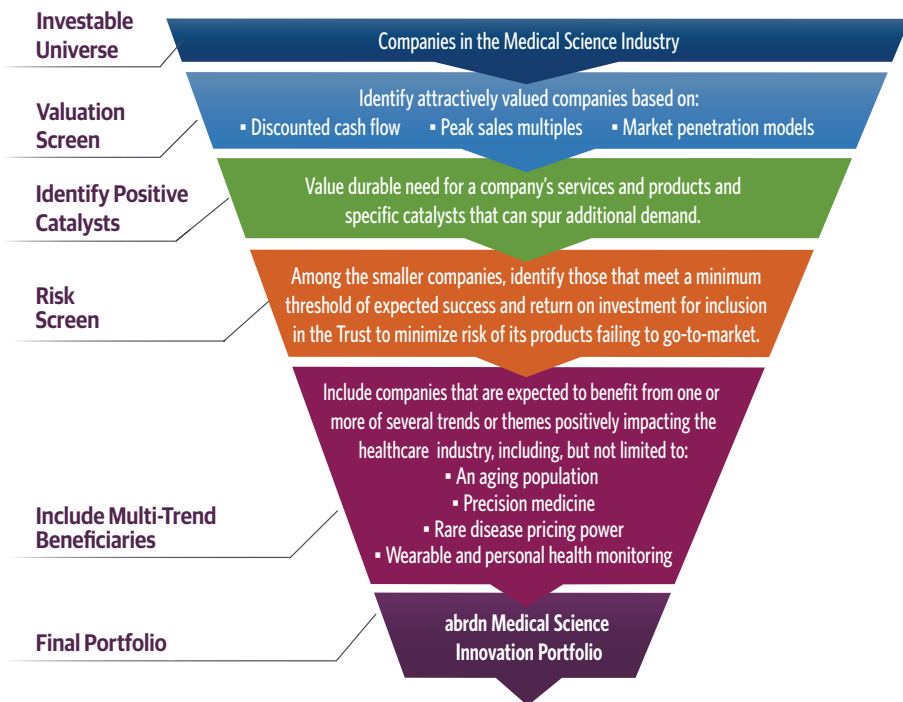
The portfolio seeks to offer exposure to ten identified segments of the market where Guggenheim and abrdn believe significant innovation and growth are occurring:

Genetic Medicine & Rare Disease The use of genes to treat rare diseases by inserting functional or healthy copies of a gene to circumvent the function of a mutated gene that is dysfunctional. Rare diseases affect an estimated 25-30 million Americans. ¹	Neurological Disorders Diseases of the brain and central nervous system remain a challenge where current treatment options leave room for improvement. Unmet need exists for those suffering from major depression, migraines, Alzheimers and Parkinsons.
Special Situations: Diabetes Diabetes describes treatments for diabetes and obesity. Diabetes management needs are met with glucose monitoring devices, insulin pumps, and medicines. By achieving significant weight loss safely, new medicines are now moving to the general population to fight obesity.	Targeted Oncology Treatments that focus on cancer cells with less harm to normal/healthy cells. A dominant trend is the development of therapies personalized to each individual's specific disease, often using genomic testing.
Autoimmune Disorders These disorders occur when the immune system mistakenly attacks and kills the body's own cells. New advances are exploring targeted and personalized medicine to treat these disorders.	Advanced Devices & Equipment Implants, consumables, monitoring equipment and wearables used in the diagnosis and treatment of diseases are improving patient outcomes and lowering overall healthcare costs.
Diagnostics A focus on diagnosis and therapy of disease.	Digital & Personal Health Monitoring Leverage technology to monitor and manage chronic patients.
Core Holdings A health care company Guggenheim and abrdn considered to hold a strong competitive position in its area of focus with strong growth opportunities.	Aging Population The percentage of Americans 65+ is expected to increase 47% by 2050 ² —this demographic will likely have more healthcare needs.

Source: Guggenheim Investments/abrdn.

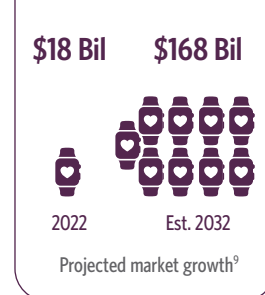
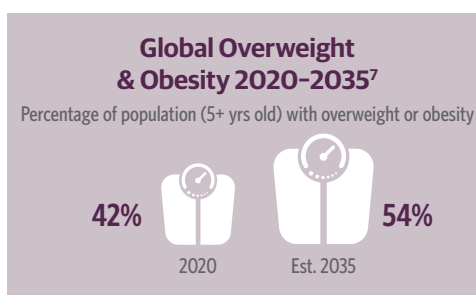
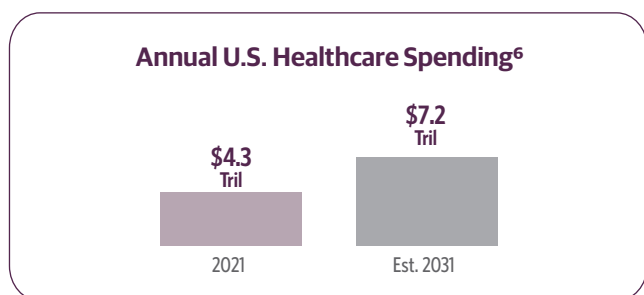
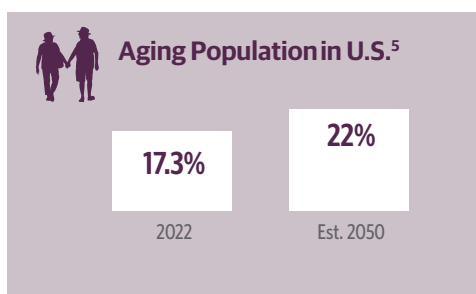
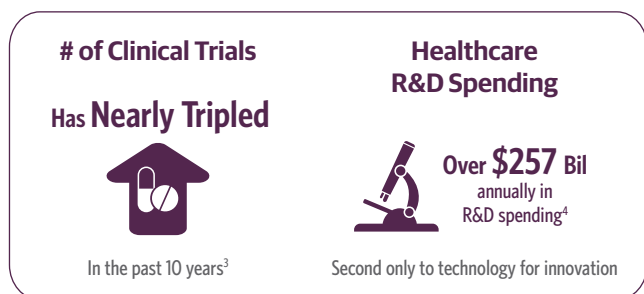
Security Selection Process

In selecting the innovative healthcare companies to be included in the portfolio, Guggenheim, with the assistance of abrdrn, starts with a universe of companies in the medical sciences industry, which include healthcare companies, as well as those whose business is involved in researching, developing and producing medical, pharmaceutical or biotechnology products, supplies or equipment.



abrdrn offers investment expertise across all key asset classes, regions and markets so that clients can capture investment potential wherever it arises. It operates in over 30 locations worldwide, ensuring first-hand insight into companies, industries and markets. As of March 31, 2024, abrdrn managed \$472.8 billion in assets on behalf of individuals, funds, governments, pension funds, insurer, companies, charities and foundations across 80 countries. The combination of abrdrn's research, thematic thinking, and extensive on-the-ground analysis helps abrdrn find the most sustainable future-fit investment opportunities globally.

Trends Impacting the Healthcare Industry



³ Clinicaltrials.gov from 157,914 in 2013 to 472,608 11.9.2023. ⁴ Bloomberg, Largest 250 Global Healthcare Companies R&D Spend Last 12 Months as of November 2023. ⁵ Statista, "U.S. Seniors as a Percentage of the Population 1950 - 2050," October 10, 2023. ⁶ CMS' National Health Expenditure Fact Sheet, 2013-2031, 9.6.2023. ⁷ "World Obesity Atlas 2024," March 2024. ⁸ NIH, "Study reveals wearable device trends among U.S. adults," 6.15.2023. ⁹ Precedence Research, "Wearable Medical Devices Market 2023 - 2032," November 2023.

There is no guarantee that the trends and projections noted above will continue or come to fruition and they are subject to change.

PORTFOLIO HOLDINGS

Holdings, breakdown, and weightings are as of 5.17.2024 and subject to change.

Symbol	Company Name	Symbol	Company Name
Advanced Devices & Equipment 10.15%		Genetic Medicine & Rare Disease 18.38%	
BDX	Becton, Dickinson and Company	ARWR	Arrowhead Pharmaceuticals, Inc.
DHR	Danaher Corporation	ASND	Ascendis Pharma A/S
EW	Edwards Lifesciences Corporation	RNA	Avidity Biosciences, Inc.
INSP	Inspire Medical Systems, Inc.	BMRN	BioMarin Pharmaceutical, Inc.
ISRG	Intuitive Surgical, Inc.	DYN	Dyne Therapeutics, Inc.
SYK	Stryker Corporation	IONS	Ionis Pharmaceuticals, Inc.
Aging Population 11.82%		RYTM	Rhythm Pharmaceuticals, Inc.
APLS	Apellis Pharmaceuticals, Inc.	SRPT	Sarepta Therapeutics, Inc.
CYTK	Cytokinetics, Inc.	SRRK	Scholar Rock Holding Corporation
ELV	Elevance Health, Inc.	RARE	Ultragenyx Pharmaceutical, Inc.
HCA	HCA Healthcare, Inc.	VRTX	Vertex Pharmaceuticals, Inc.
MCK	McKesson Corporation	Neurological Disorders 10.02%	
TEVA	Teva Pharmaceutical Industries Limited	ACHC	Acadia Healthcare Company, Inc.
UNH	UnitedHealth Group, Inc.	ALKS	Alkermes PLC
AutoImmune Disorders 6.83%		BIIB	Biogen, Inc.
ARGX	Argenx SE	DNLI	Denali Therapeutics, Inc.
IMVT	Immunovant, Inc.	ITCI	Intra-Cellular Therapies, Inc.
REGN	Regeneron Pharmaceuticals, Inc.	NBIX	Neurocrine Biosciences, Inc.
TARS	Tarsus Pharmaceuticals, Inc.	Special Situations - Diabetes 12.95%	
Core Holding 9.85%		AKRO	Akero Therapeutics, Inc.
AVTR	Avantor, Inc.	AMGN	Amgen, Inc.
IDXX	IDEXX Laboratories, Inc.	DXCM	Dexcom, Inc.
SNY	Sanofi SA	LLY	Eli Lilly & Company
TMO	Thermo Fisher Scientific, Inc.	NVO	Novo Nordisk A/S
PCVX	Vaxcyte, Inc.	TNDM	Tandem Diabetes Care, Inc.
ZTS	Zoetis, Inc.	VKTX	Viking Therapeutics, Inc.
Diagnostics 6.69%		WST	West Pharmaceutical Services, Inc.
CRL	Charles River Laboratories International, Inc.	Targeted Oncology 11.66%	
EXAS	Exact Sciences Corporation	ARVN	Arvinas, Inc.
LNTH	Lantheus Holdings, Inc.	AZN	AstraZeneca PLC
NTRA	Natera, Inc.	KURA	Kura Oncology, Inc.
Digital & Personal Health Monitoring 1.65%		MRK	Merck & Company, Inc.
BSX	Boston Scientific Corporation	NUVL	Nuvalent, Inc.
		SNDX	Syndax Pharmaceuticals, Inc.
		XNCR	Xencor, Inc.

PORTFOLIO SUMMARY

Inception Date	5.20.2024
Termination Date	5.20.2026
Initial Offer Price	\$10.00
Number of Issues	60
Historical Annual Dividend Distribution⁹	\$0.0034
Distributions	25th day of each month commencing on 6.25.2024, if any

SALES CHARGES AND ESTIMATED EXPENSES

The sales charges (S/C) and estimated expenses are based on a \$10 per unit offering price.

	Standard	Fee/Wrap ¹⁰
Deferred S/C ¹¹	2.25%	-
Creation and Development (C&D) Fee	0.50%	0.50%
Total S/C	2.75%	0.50%
Estimated Organization Expenses ¹²	0.45%	0.45%
Estimated Annual Fund Operating Expenses ¹³	0.30%	0.30%

TICKETING INFORMATION - CUSIPS

Cash	40178A265
Reinvest	40178A273
Fee/Cash	40178A281
Fee/Reinvest	40178A299
Ticker	CTMEHX

⁹The Historical Annual Dividend Distribution (HADD) is as of the day prior to trust deposit and subject to change. There is no guarantee the issuers of the securities included in the trust will declare dividends or distributions in the future. The HADD of the securities included in the trust is for illustrative purposes only and is not indicative of the trust's distribution rate. The HADD is the weighted average of the trailing twelve-month distributions paid by the securities included in the portfolio and is reduced to account for the effects of fees and expenses, which will be incurred when investing in the trust. The HADD will vary due to certain factors that may include, but are not limited to, a change in the dividends paid by issuers, a change in trust expenses or the sale or maturity of securities in the portfolio. ¹⁰Fee/Wrap-based accounts will not be assessed the deferred sales charge for eligible purchases and must purchase units with a Fee-based CUSIP. For unit prices other than \$10, percentage of the C&D fee will vary. ¹¹The deferred sales charge will be deducted in three monthly installments on the last business day of months 7 through 9 (December 2024 to February 2025) or upon early redemption. For unit prices other than \$10, percentages of C&D fees, and DSCs will vary but in no event will the maximum sales charge (S/C) exceed the total S/C. Early redemption of units will still cause payment of the DSC. However, an initial sales charge, which is equal to the difference between the maximum S/C and the sum of any remaining deferred S/C charges and C&D, will be charged if the price paid for units exceeds \$10 per unit. ¹²Estimated Organization Expenses are assessed on a fixed dollar amount per unit basis, therefore, actual organization costs may be more or less than estimates. For additional information on organizational costs and potential caps, please see the prospectus. ¹³Trust operating expenses include fees for administration, bookkeeping, the trustee, sponsor, and evaluator. This expense also includes an estimated Trust operating expense based upon an estimated trust size. If the Trust does not reach or falls below the estimated size, the actual amount of the operating expenses may exceed the amount reflected. Please see "Fees and Expenses" in the Trusts prospectus for additional information.

abrdn Medical Science Innovation Portfolio, Series 8 is a Unit Investment Trust.

RISK CONSIDERATIONS: As with all investments, you may lose some or all of your investment in the trust. No assurance can be given that the trust's investment objective will be achieved. The trust also might not perform as well as you expect. This can happen for reasons such as these: • Securities prices can be volatile. The value of your investment may fall over time. Market values of the Trust's securities fluctuate in response to various factors affecting an issuer. Additionally, events such as war, terrorism, natural and environmental disasters and the spread of infectious illnesses or other public health emergencies are impossible to predict and may adversely affect the economy, various markets and issuers, which may negatively impact the performance of the Trust and the Trust's ability to achieve its investment objectives. • The Trust is concentrated in the health care sector. The factors that impact the health care sector will likely have a greater effect on this Trust than on a more broadly diversified trust. • The Trust invests in a U.S.-listed foreign security and in American Depositary Receipts ("ADRs"), which will be more volatile than U.S. securities due to such factors as adverse economic, currency, political,

social or regulatory developments in a country. • The Trust invests in securities issued by small- and mid-capitalization companies, which involve more investment risk to limited product lines, markets or financial resources and may be more vulnerable to adverse general market or economic developments. • The Trust may be susceptible to potential risks through breaches in cybersecurity. • The Trust is subject to risks arising from various operational factors and their service providers. Although the Trust seeks to reduce operational risks through controls and procedures, there is no way to completely protect against such risks. **Please see the Trust prospectus for more complete risk information.**

Unit Investment Trusts are fixed, not actively managed and should be considered as part of a long-term strategy. Investors should consider their ability to invest in successive portfolios, if available, at the applicable sales charge. UITs are subject to annual fund operating expenses in addition to the sales charge. Investors should consult an attorney or tax advisor regarding tax consequences associated with an investment from one series to the next, if available, and with the purchase or sale of units. Guggenheim Funds Distributors, LLC does not offer tax advice.

This material is not intended as a recommendation or as investment advice of any kind, including in connection with rollovers, transfers, and distributions. Such material is not provided in a fiduciary capacity, may not be relied upon for or in connection with the making of investment decisions, and does not constitute a solicitation of an offer to buy or sell securities. All content has been provided for informational or educational purposes only and is not intended to be and should not be construed as legal or tax advice and/or a legal opinion. Always consult a financial, tax and/or legal professional regarding your specific situation.

Read the trust's prospectus carefully before investing. It contains the trust's investment objectives, risks, charges, expenses and other information, which should be considered carefully before investing. Obtain a prospectus at GuggenheimInvestments.com.

Guggenheim Funds Distributors, LLC

Member FINRA/SIPC 5/2024 UIT-FCT-TMED-008 #61471